

SMITHDON HIGH SCHOOL
HUNSTANTON

PROSPECTUS

'We are members of one body
responsible for one another'

An Inspector Calls



dy. We are



HEADTEACHER'S WELCOME

Following my roles as Deputy Headteacher and Head of School at Smithdon High School for four years, I am thrilled to be the Headteacher. I had the privilege to be part of the school's developments during that time and am proud to continue building on those successes, alongside our fantastic support staff and teachers.

From the first day I visited Smithdon, I was captured by its community feel and the tremendous welcome provided by both students and staff – a welcome that visitors to the school today continue to comment on from their arrival at Reception to their experience on site.

Smithdon High School is proud to be a part of the West Norfolk Academies Trust. We are passionate that all children are given the same opportunities to succeed, whatever their background and skills, and are instilled with the strength to build on their experiences to become the best version of themselves – and we aim to provide this for every child.

With a talented staff, who develop a strong rapport with our students, supporting them in their journey to educational excellence and to find their individual strengths and interests, each child's individual journey begins when they become part of our Smithdon community – a community that goes beyond the physical boundaries of the school itself, into our wider community of Hunstanton and the surrounding areas: your community.

At Smithdon, we value all experiences for students both in curriculum lessons and outside the curriculum. As such, we recognise the importance of co-curricular opportunities and we encourage students to get involved in at least one activity: from sports to performing arts, from Art Club to Dungeons and Dragons, and more.

Our school motto, to Work Hard, Be Kind and Smile, embodies everything we expect of our students and of ourselves.

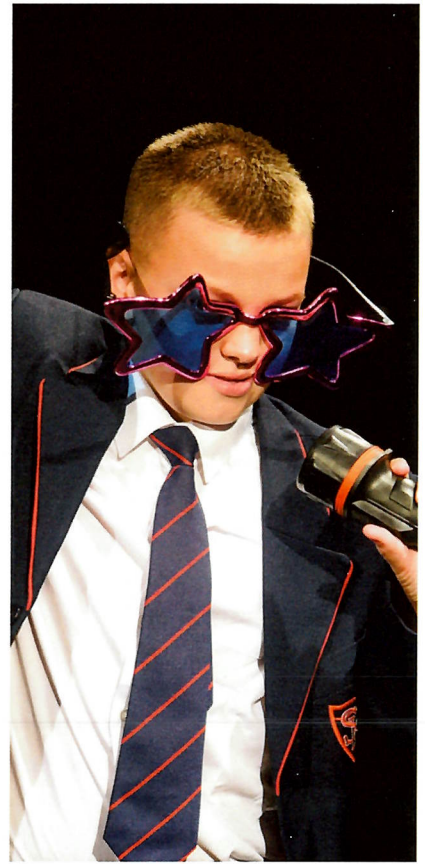
- When we work hard, we open a world of opportunities and give ourselves and everyone else the ability to succeed and build a bright future.
- Being kind is essential for a happy community: being kind to ourselves, as well as others, is just as important
- There are so many opportunities to gain rewards, take part in fun activities and celebrate successes that make us all smile, every day.

Smiling is infectious – spreading positivity for the whole community. We welcome you to visit us at any time and witness our motto in action for yourselves – please do contact the school office to make an appointment.

This prospectus will only give you a flavour of life here at Smithdon High School. If you have any further questions, or would like to arrange a visit, please feel free to contact us for an initial conversation.

We hope you will choose us for the next part of your child's journey and we look forward to celebrating their successes with you.

Amanda Gibbins
Headteacher



WHAT WILL MY CHILD LEARN WHILST THEY ARE AT SMITHDON HIGH SCHOOL?

At Smithdon we believe that every child has talents which need to be explored, developed and shared.

To ensure that each student discovers these talents we offer a broad and balanced curriculum including academic, creative and sporting provision that is appropriate for every child regardless of their specific needs and challenges. The curriculum includes educational experiences inside and outside of the classroom and we encourage the extension of students' educational experiences.

Our ASPIRE curriculum is specifically designed to support students with their Personal, Social, Health and Careers Education (PSHCE). They study this during the thirty minute registration and tutor period each morning.

We regularly review our curriculum, to ensure that the needs of all students are being met and that we are enabling them to achieve success in exams and assessments. All students follow a two-week timetable to maximize learning time.

We place a strong emphasis on providing additional literacy and numeracy for those students who need, ensuring that all students are able to access and thrive in the secondary curriculum.

In Key Stage 3 all students will receive a "Knowledge Organiser" each term, which they keep with them at all times to aid with homework and class-based assessments.

KEY STAGE 3

Year 7 and Year 8

All students study English, Mathematics, Science, Geography, History, a Modern Foreign Language, Music, Drama, RE, Art, ICT, Technology and PE. The unique ASPIRE curriculum delivers the PSHCE programme of study.

Year 9

Similar to Year 8, but as students move towards KS4, they are provided with the opportunity to learn more about the range of subjects on offer at KS4.

KEY STAGE 4

Year 10

All students continue to study English Language and English Literature (two separate GCSEs), Mathematics and Science (either Combined Science or Triple Science). They then complete their remaining subject allocations from a range of other courses, some of which may include the traditional subjects they have studied throughout KS3, and some of which may be new.

We encourage as many students as possible to study the English Baccalaureate (English, Mathematics, Science, one Modern Foreign Language, History or Geography) and particularly those students who may wish to go to university or continue to study after they turn 18.

No public examinations take place at the end of Year 10, but students will cover course content to prepare them for both exams and assessments at the end of Year 11. The ASPIRE curriculum delivers PSHCE in Year 10.

Year 11

Students continue with their chosen courses from Year 10 and prepare for the final examinations and assessments for the end of Year 11. PSHCE continues to be taught through the ASPIRE Curriculum. Preparations are made for post-16 education, employment and training.

ASPIRE Curriculum

The ASPIRE curriculum is the unique curriculum designed to deliver Personal, Social, Health and Citizenship Education (PSHCE) here at Smithdon. It has been designed to develop throughout the key stages and provide students with the necessary knowledge and skills. Through the ASPIRE Curriculum they will be able to understand their own personal development; undertake thought-provoking and stimulating activities; meet with visiting speakers and become better citizens. The ASPIRE curriculum also supports us in delivering our "Prevent Agenda" and ensures that all students are aware of the dangers of radicalisation.

Whole school and Key Stage assemblies each week allow us to link ideas together and develop our sense of community in school, which is a source of pride for us at Smithdon.

WHAT OPPORTUNITIES WILL THEY HAVE OUTSIDE OF NORMAL LESSONS?

The Co Curriculum

Sport

Smithdon has a long heritage of sporting success and this is encouraged today. Traditional sports such as Rugby, Cricket, Football, Netball and Athletics are taught and teams created to compete across the region. We also develop other sports such as martial arts and table tennis where we have staff who have the necessary coaching qualifications. All Year 10 students gain the qualification of Sports Leader and organise and run the annual Sports Festival with the local primary schools at Smithdon.

The school has invested significantly in developing sports and so pupils have beautiful outdoor grounds as well as a gym and a Sports Hall, which has recently been completely refurbished, with a new roof, floor and lighting.



Field Trips

We know that the best teaching often takes place outside of the classroom, and that first hand experiences can help students' learning and understanding. The curriculum is enriched by students' field trips and visits out of school, where they can pursue their studies through investigation and exploration. We encourage academic school trips at Smithdon to enhance the classroom experience and broaden the student experience.

Duke of Edinburgh

The Duke of Edinburgh's Award Scheme aims to give all young people, aged 12-24 the chance to develop skills for life and work, fulfil their potential and have a brighter future. We run a popular Duke of Edinburgh Award group. Many of our students have successfully achieved the Bronze Award and we now offer the Silver Award programme, which a significant number are working towards. We also work closely with Springwood Sixth Form, who offer the Gold Award programme in the Sixth Form.

Arts and Music

Music and Drama are centrally placed at Smithdon High School. Our calendar proudly displays our Music evenings such as the Christmas Carol Concert and Easter Spring Concert. Pupils have the opportunity to get involved in the annual school play/musical, in a main role, the chorus or technical support. When not performing, students are given the opportunity to visit theatres to see productions. We also regularly invite visiting theatre groups to ensure that all students have the chance of seeing a live performance during their time with us.

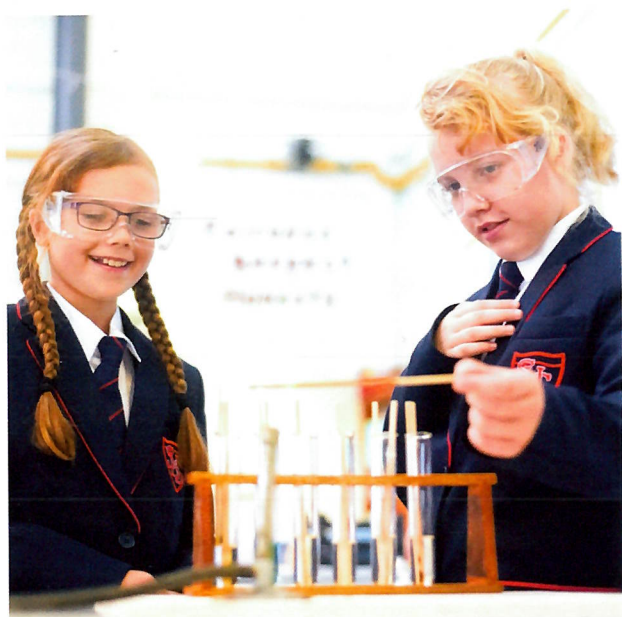
All students are offered the possibility of taking up a musical instrument and have subsidised peripatetic music lessons during school time. Links established at the local primary schools will continue into Smithdon under an initiative by the Norfolk Music Hub and West Norfolk Academies Trust. Please ask for further details.



Co Curricular Trips

Alongside academic field trips we also encourage students to get involved in a variety of other excursions and residential trips. At Smithdon, we would expect all students at some point to visit theatres, art galleries and other sites of cultural and historical significance. Year 7, for example, have a team-building residential at the Norfolk Lakes Centre in November.

Foreign trips also take place. In History we take students to the battlefields in France and Belgium. The Art department have taken students to New York to see the art galleries, Broadway and Times Square.



Clubs, groups and extended learning opportunities

Students can get involved in a number of different initiatives and opportunities throughout their time at Smithdon High School. Staff run a variety of different clubs and activities for students to develop their personal interests, including the STEM science club and the Year 11 Saturday one-to-one Maths tutoring. Sports, Dance and Drama through to Reading Rangers, Debating Club and getting involved in the local and national Magistrates competition all take place throughout the year.





HOW WILL MY CHILD'S SPECIFIC NEEDS BE MET WHEN AT SCHOOL?

SEND

It is paramount that students with special educational needs and/or disabilities receive the correct provision and support. We have a large number of specialist staff whose role in the school is to work with our SEND students in order to maximise their enjoyment and success during their time at Smithdon High School.

We work closely with the primary schools to enable a smooth transition to secondary school in Year 7. We assess each child through our trained SENDCO in order to establish their needs and identify the support each student requires. Students identified as requiring additional support can then access a wide range of resources, which may include one-to-one in-class support, additional numeracy and literacy support, additional taught lessons within the curriculum time, collaboration with outside agencies or an individual Education

and Health Care Plan.

We make sure that each teacher and Pastoral Support staff member is aware, not only of the specific learning needs of each student, but also their personal likes and dislikes inside and beyond the classroom.

The "CLS" next to the library is a bespoke learning space and also a safe place which is permanently manned and used exclusively for our students with Special Educational Needs or Disabilities.

At Smithdon High School all of our students have talents, gifts and potential to be identified and developed in order for each one to succeed and feel an essential and valued part of our community. If you would like further information about our SEND provision, please do not hesitate to contact the school and we would be very happy to speak to you.

Gifted and Talented

"Gifted students" are those students whose potential in one or more subjects is significantly above the average. We provide opportunities for those students to be stretched, challenged, stimulated and engaged within lessons. Through our co curriculum, trips out to universities, visiting speakers and interaction with Springwood Sixth Form, we expect our students to be inspired to greater things.

"Talented students" are those who have above-average skills - whether that is linguistically, physically, musically or socially. We are committed to identifying these students and nurturing their talents during their time with us. We would expect our talented students to be involved in schools productions, concerts and/or sports teams, and academic initiatives such as a foreign exchange trip.

WHO WILL BE TEACHING MY CHILDREN AND LOOKING AFTER THEIR LEARNING WHEN AT SCHOOL?

Strong Leadership

Our Leadership Team at Smithdon High School is committed to ensuring that every student has the care and support they need to succeed.

The team is committed to delivering a broad and balanced curriculum, with an emphasis on the needs of the personalised learning of each student.

Every leader is enthusiastic about ensuring our students perform to the best of their abilities, and will work to ensure that they do achieve the results and outcomes that they are capable of.

Our Leadership Team cares about the children at Smithdon High School.



WHO WILL CARE FOR MY CHILD WHEN THEY ARE AT SCHOOL?

Pastoral Organisation and tutor groups

Effective pastoral care means good communication and the establishment of good relationships between us, the students and their families. Smithdon High School has a well-organised and managed system of pastoral care to cater for each student's specific needs.

Each year group is divided into mixed ability tutor groups with a form tutor who will look after your child's pastoral needs and deliver the ASPIRE curriculum throughout their time at Smithdon High School. Working alongside each Key Stage, and Year 7 particularly, is a non-teaching Pastoral Manager who, is contactable throughout the day to care for the students and to communicate with parents.

Working alongside the Pastoral Managers and Senior Leaders within Smithdon is an Attendance Officer. The Attendance Officer will work alongside students and families to support good attendance at school.

Vision and Values

At Smithdon High School we are committed to providing the best education and encouraging each student to be the best they can be. We endeavour to ensure that every day teaching and learning happens without interruption, that everyone is polite and friendly and that everyone feels safe and supported. In doing so, we can achieve our vision to be the school of choice in North West Norfolk, because of our successful results, focus on the whole individual and our supportive community culture.

All of this is encompassed in our motto to Work Hard, Be Kind and Smile, reflecting core values of responsibility and respect, positivity, consistency, supportiveness and excellence. Smithdon also demands high standards of behaviour and uniform to allow effective learning to take place.

We are very fortunate to be in the wider professional family of the West Norfolk Academies Trust, allowing us to take advantage of the professional support and educational expertise on offer.

As well as providing the core curriculum at Smithdon, we also have a growing array of extracurricular activities and programmes to meet every interest and develop any passion. We are particularly proud of our Duke of Edinburgh's Award programme, which is very successful year on year.

We are all proud to be a part of Smithdon's community. It is a great place to work and learn, and all that we do is designed to help us to be the best we can be.

The Smithdon Seven

We all abide by "The Smithdon Seven" in everything we do:

1. We believe in ourselves and are proud of our achievements
2. We aim high and accept challenge to achieve our ambitions
3. We take responsibility for our choices, our actions and our environment
4. We work together to support our community
5. We are present, we are equipped to learn, we work hard and we always give our best
6. We are respectful and we listen to others
7. We take pride in the presentation of ourselves and our work



WHAT ARE THE FACILITIES AT SMITHDON LIKE?

Originally built to an award-winning design in 1954, Smithdon High School has undergone a number of transformations since its original incarnation and is now part of the Government's Building Project to keep it's significant features while also modernising the building for a 21st Century education. In 2000, the Shaw Building was built and opened by Queen Elizabeth II, which now houses English, Humanities and Modern Foreign Languages. A new technology suite housing five technology rooms was also added at this time. More recently, in 2020, the building housing ICT, Art and Food Technology has had a complete transformation during its refurbishment, bringing it up to date to a modern specification. Added to this, excellent sports and Drama facilities, means Smithdon High School has the history and infrastructure to help cultivate every student's potential.



WHAT DOES THE SCHOOL DAY LOOK LIKE FOR YEAR 7?

8.30 - 9.00	Form time, registration and ASPIRE Curriculum
9.00 - 10.00	Lesson 1
10.00 - 10.20	Break
10.20 - 11.20	Lesson 2
11.20 - 12.20	Lesson 3
12.20 - 1.00	Lunch
1.00 - 2.00	Lesson 4
2.00 - 3.00	Lesson 5
From 3.00	After-School Clubs, Extended Learning and Sports.

WHAT DOES THE SCHOOL UNIFORM COMPRISE OF?

We are very proud of our school uniform at Smithdon High School. The design looks back to the original uniform from the 1950s and further strengthens our school ethos, values and expectations, including good behaviour. The uniform also strengthens students' sense of belonging to and pride in their school and continues to develop our inclusive community.

The uniform is a navy blazer with red trim, white shirt, clip on tie, black school shoes, light grey trousers for boys or girls and the badged school skirt for girls. More specific guidance on what is or is not allowed can be found in induction packs and on the school website.

WHAT ARE THE LUNCH ARRANGEMENTS?

A variety of healthy hot and cold meals and snacks are provided each day in the school canteen. The school is a cashless school and all parents will need to create a Parent Pay account. Each year group has an allotted time, on rotation, to buy their meals.

HOW ARE MY CHILD'S ACHIEVEMENTS RECOGNISED AT SCHOOL?

We are very keen to recognise student achievements at Smithdon High School. We are proactive in this and ensure that teachers regularly award Reward points. Termly Reward Assemblies take place; alongside annual Prize Giving ceremonies. Those students who work hard, are kind, smile and have good attendance are also treated to reward trips towards the end of the year. We communicate successes and achievements to parents throughout the year and hold an annual "postcard competition", which is related to this communication!



DOES MY CHILD RECEIVE REGULAR HOMEWORK?

Our expectations on homework are very clear and we support our students and families to be able to achieve and sustain an appropriate level of homework throughout each Key Stage.

In Key Stage 3, students will receive a **Knowledge Organiser** at the beginning of each term. This contains all the core knowledge that a student is required to know for that term. Each and every lesson starts with a quiz or retrieval activity on current and prior learning, there are regular feedback sessions and in the Summer Term students will undertake a formal assessment for the subject. It is expected that the student uses the knowledge organiser to learn for the retrieval activities in order to make the knowledge "stick". Therefore, students have homework each night, preparing for the lesson the next day. In addition to the revision, we would expect students to read each day and they receive specific Mathematics homework each week. In addition to the revision homework, they may get one additional piece of lengthier homework each term.

At KS4, homework is subject-based and **knowledge packs** are written by each department to support lesson quizzes and knowledge-based learning at home. Students should have developed the skills to learn



HOW DO I KNOW THAT MY CHILD IS MAKING PROGRESS?

In the Autumn Term there us a Parent-Tutor Evening to establish communication links and see how your child has settled into the new year group.

All students receive two reports per year. At KS3 these are based on effort, attendance, punctuality and the end of year assessment. Towards the end of Year 10, GCSE targets and predicted grades are introduced to help prepare and inform students and parents for the terminal exams at the end of Year 11.

Assessments and Reports alongside a subject Parents' Evening will coincide at least once a year to help establish progress and look at how we can further support each student with their learning.



CONTACT US

Smithdon High School, Downs Road, Hunstanton, Norfolk, PE36 5HY

t: 01485 534541

e: office@smithdonhigh.org.uk

www.smithdonhigh.org.uk

[@smithdon_High](https://twitter.com/smithdon_High)



WHAT DOES THE SCHOOL DAY LOOK LIKE FOR YEAR 7?

8.30 - 9.00	Form time, registration and ASPIRE Curriculum
9.00 - 10.00	Lesson 1
10.00 - 10.20	Break
10.20 - 11.20	Lesson 2
11.20 - 12.20	Lesson 3
12.20 - 1.00	Lunch
1.00 - 2.00	Lesson 4
2.00 - 3.00	Lesson 5
From 3.00	After-School Clubs, Extended Learning and Sports.

WHAT DOES THE SCHOOL UNIFORM COMPRISE OF?

We are very proud of our school uniform at Smithdon High School. The design looks back to the original uniform from the 1950s and further strengthens our school ethos, values and expectations, including good behaviour. The uniform also strengthens students' sense of belonging to and pride in their school and continues to develop our inclusive community.

The uniform is a navy blazer with red trim, white shirt, clip on tie, black school shoes, light grey trousers for boys or girls and the badged school skirt for girls. More specific guidance on what is or is not allowed can be found in induction packs and on the school website.

WHAT ARE THE LUNCH ARRANGEMENTS?

A variety of healthy hot and cold meals and snacks are provided each day in the school canteen. The school is a cashless school and all parents will need to create a Parent Pay account. Each year group has an allotted time, on rotation, to buy their meals.